

GENERAL CONTEST INFORMATION

*Check contest registration for events offered. *Entries received first will compete last. *Late entries will be accepted until 9:00 a.m. for open competitions. No late entries for pageant events. A \$3.00 late charge per event will be applied to late entries. Legacy awards provided by former national and state champions will be awarded for all events. Age divisions as per NBTA rules. *Results will be posted for all open events. Pageant winners will be announced at the end of the day. 2012 NBTA rules will be used. Judges decisions are final. *Neither school or contest directors are responsible for accidents or lost/stolen articles. **No partial payments accepted. NO REFUNDS. NO OUTSIDE FOOD IS ALLOWED INTO THE BUILDING.** Concessions will be available by Academy Dance Boosters. For additional information, call Sherry Overton Wendling at (573) 219-2116 (cell) or e-mail afacompteam@yahoo.com. Visit Academy of Fine Arts on Facebook or our website <http://academydancers.com/>

DIRECTIONS TO TWIRLING COMPETITION

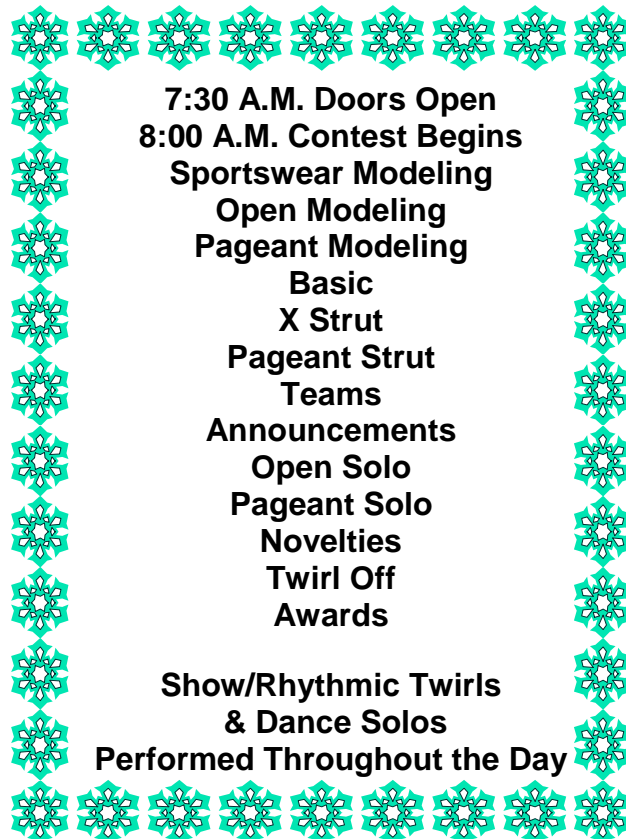
Take Hwy 63 exit off of I-70 in Columbia.
Drive 32 miles and take the State Hwy Rt M exit
Turn Left at exit and drive .6 miles
Turn Right on Gratz Brown and drive .5 miles
Moberly Middle School is on the left at the corner of Gratz Brown and Kwix Road

Moberly Middle School
920 Kwix Road
Moberly, MO 65270



SATURDAY, FEBRUARY 11, 2012

ORDER OF EVENTS



Snowflake Twirling
Competition 2012
Academy of Fine Arts
3210 South Providence
Columbia, MO 65203

AN EXCITING TWIRLING EVENT
PLAN TO ATTEND OUR 10TH ANNUAL



SNOWFLAKE TWIRLING COMPETITION

Saturday, February 11, 2012



ACADEMY OF FINE ARTS SNOWFLAKE TWIRLING COMPETITION

SATURDAY, FEBRUARY 11, 2012
DON'T MISS THIS FUN COMPETITION!!!



N.T.B.A OPEN SANCTIONED COMPETITION

Saturday, February 11, 2012
Contest Director: Sherry Overton Wendling
Doors open at 7:30a.m.
Contest Begins at 8:00 a.m.

Moberly Middle School
920 Kwix Rd.
Moberly, Missouri 65270
Entry Deadline: Sat, January 21rd



TRIBUTE TO WINTER!

This year's Twirling Competition will have a Winter theme.

MISS WINTER WONDERLAND SPORTSWEAR MODELING

Modeling in winter attire – open to all Contestants. First place winner will receive banner and legacy award, 2nd and 3rd – legacy award. Results from the Miss Winter Wonderland Event will be announced immediately following the Team competition. Please be available for awards and pictures.

MISS SNOWFLAKE PAGEANT COMPETITION (Modeling, Strut, Solo)

Modeling in costume & interview – Open to All Novice, Beginner, Intermediate and Advanced Contestants. First place Novice, Beginner, Inter, and Advanced winners will receive banner, prize and legacy award, 2nd and 3rd – legacy award.

*If divisions warrant, we will add 4th & 5th place awards.

***GYMNASIUM HEIGHT 30+ FEET.

TWIRLING TEAM COMPETITION

Open to all Dance Twirl, Twirl Teams, Halftime Shows and Corps. Small award to each team member. Age divisions – Pee Wee 0-5.99, Tiny Tot, juvenile, Junior, Senior – Small, Large and X-Large. Beg/Adv.

FIRST SOLO

Open to all Novice twirlers who have not received a first place.

DIVISIONALS

Twirlers perform in front of a judge for comments and ribbons.

TWIRL OFFS

The first and second place winners in the ADVANCED SOLO Competition will re-compete for GRAND CHAMPION TITLE. THIS EVENT WILL BE DOUBLE JUDGED. *Winner will receive a \$50.00 savings bond and a Legacy Award.

NOTE:

N.B.T.A rules state: To compete in a divisional lane, a contestant must also compete in the same event offered during competition.